



PHOTO & SUBMISSION Formats & Guidelines

Photos must be submitted **as attachments** to staci@thetop100magazine.com and should be in JPEG, PNG, or PSD file format. PDFs are not recommended for photo submission. **DO NOT EMBED** YOUR PHOTO IN THE EMAIL OR IN A WORD DOCUMENT. All photos should be labeled: last name, first name. **We cannot obtain photos from online sources such as LinkedIn or a website; they are too small for print.**



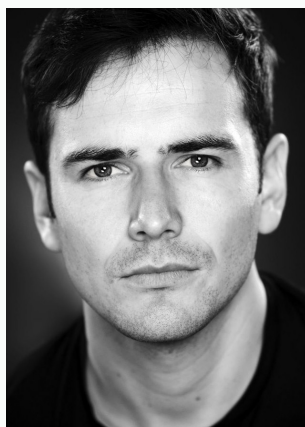
Cover Photos:

Cover photos must be in vertical orientation with room at the top for the magazine branding. Extreme closeups are not recommended (see examples). Image must be high-resolution (print quality = 300ppi at 8" x 10").

Good for Cover



Not Good for Cover



Feature Photos:

Any style of photo can be used in your feature as long as the image is print quality (300ppi at a minimum of 4" x 6"). For half and full pages, you may submit one photo. For two-page features, you may include *up to* four photos. The size of the photos in the feature will depend on the amount of text in the bio and the number of photos included.

It is a good idea to submit a photo that can be used for the link preview of your online profile. The link preview is horizontally rectangular, as shown below. Extreme closeups are not recommended for this.



Helpful Hint: High resolution (print quality) cover photos are generally over 5mb (megabytes). High resolution (print quality) feature photos are generally over 1mb. If you hover your mouse over a photo, you should see the file size. Images that are shown in kb (kilobytes) are too small for full page and multi-page features. Images that are above 150kbs are usually sufficient for half page features.

PLEASE DO NOT MANUALLY ENLARGE LOW RESOLUTION PHOTOS OR LOGOS. They will become blurry and pixelated.

You do not need to hire a professional photographer to obtain high resolution, print-quality photos. Most smartphones will do the job. The phone's camera settings must be set to the highest photo resolution. Do not email photos directly from your phone. Most times, the phone will automatically resize them. Instead, download the original to a PC or laptop, save it, then send it to us as an attachment.

To calculate the resolution of the image, simply multiply the width by the height of an image. For example, an image that's 2048 pixels wide and 1152 pixels tall has a resolution of 2.36 megapixels.



Logos:

Logos should be submitted to staci@thetop100magazine.com in one of the following file formats: jpeg, png, EPS, or AI. PDFs are not recommended. Logo file sizes should be larger than 150kb.